

What sets NETGEAR M4500 Switches apart?

NETGEAR
BUSINESS



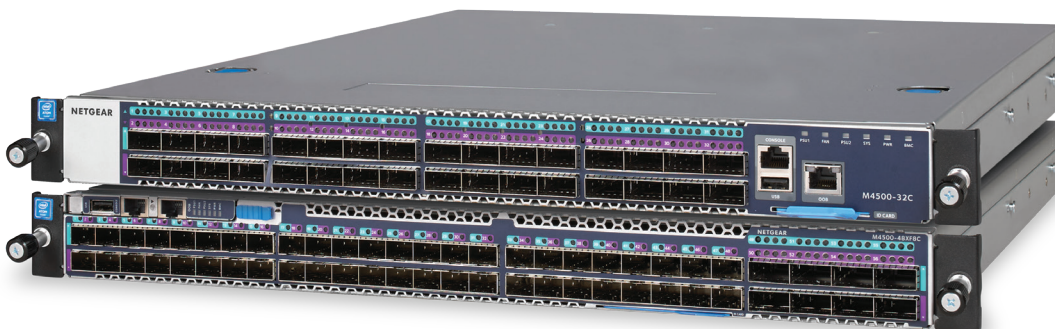
The M4500 switch series delivers up to 100G of bandwidth targeted at professional audiovisual over IP (AV over IP) installations. As AV over IP installations grow in size and complexity, the higher bandwidth, easy-to-install M4500 switches are vital in providing an alternative to expensive, difficult-to-configure traditional switches.

Data-center class M4500 models provide an unparalleled ease of use with known Layer 2 techniques that allow out-of-the-box multicasting with NETGEAR IGMP Plus™. And the M4500, along with the M4300 switches, are SDVoE certified for the highest quality, lowest latency AV over IP possible.

The M4500-32C offers 32 QSFP28 ports preconfigured for 100G and that can also support 40G QSFP+ and 50G QSFP28 optics or DAC cables. The M4500-48XFC offers 48 SFP28 ports preconfigured for 10G with 8-port 100G QSFP28 uplinks, and the SFP28 ports can support 10G and 25G.

A number of features ensure the M4500 switches provide an unmatched level of comfort. Two modular power supplies are pre-installed for 1+1 power redundancy. Additionally, six modular fan trays are pre-installed for 4+2 fan redundancy. Line-rate spine and leaf topologies with the M4500-48XF8C (32-port SFP28 and 8-port QSFP28) allow full flexibility in your network design.

M4500 models feature a Layer 3 feature set including static, policy-based and dynamic routing with VRRP, OSPF and PIM as standard. The M4500 is covered under NETGEAR ProSAFE industry-leading Lifetime Limited Hardware Warranty with 90 days of Technical Support via phone and email, Lifetime Technical Support through online chat and Lifetime Next Business Day hardware replacement for utmost peace of mind.



M4500 Series: AV over IP Aggregation

Discover the 10 reasons why our customers love the M4500

1.

Most Comprehensive Portfolio

M4500 switches scale from 10G to 100G and are available with 32 or 48 ports.

2.

Future-proof your Business

The M4500s offer 100G/50G/25G/10G ports for high speed servers or AV over IP devices.

3.

Affordable Enterprise-grade Switches

You will feel good about the price you have to pay for M4500s, with no hidden costs. Limited Lifetime warranty is included in the price. No license upgrades needed for 802.1x, MAB NAC implementation, and Layer 3 (PBR, VRRP, OSPF, PIM and BGP).

4.

Ideal for AV over IP and Multicast

Multicast is preconfigured to provide true multicast Zero Touch installation out of the box. Plug in your AV over IP endpoints and it just works.

5.

Spine & Leaf Architecture

Spine and leaf architecture means every leaf switch (10G/25G access) connects to every spine switch (distributed 100G core). No more bottlenecks or downtime!

6.

Full Speed Ahead

M4500 switches scale up to astronomic performance needs with up to 128K MAC table, 2K ARP/NDP and 4 to 6.4Tbps of switching and routing capacity.

7.

High availability

1+1 power and 4+2 fan redundancy, an x86 Intel Atom® Processor C3558 with 8GB DDR3/ECC RAM and 128GB SSD storage for continuous serviceability in sensitive applications.

8.

Remove the need for Layer-3 PIM in large AV over IP deployments

NETGEAR IGMP Plus™ greatly simplifies system architectures with automated Layer-2 IGMP across the entire AV over IP network, achieving the same goals as PIM-SSM but without any configuration between switches.

9.

HA Best Practices

The M4500s link aggregation (L2/L3/L4 LACP), load balancing and MLAG failover mean no single point of failure across your AV over IP endpoints or virtualized servers.

10.

Full power redundancy

The M4500 series provides simplified, redundant power supplies. An additional, hot-swappable PSU is already in place for peace of mind in mission-critical operations.